

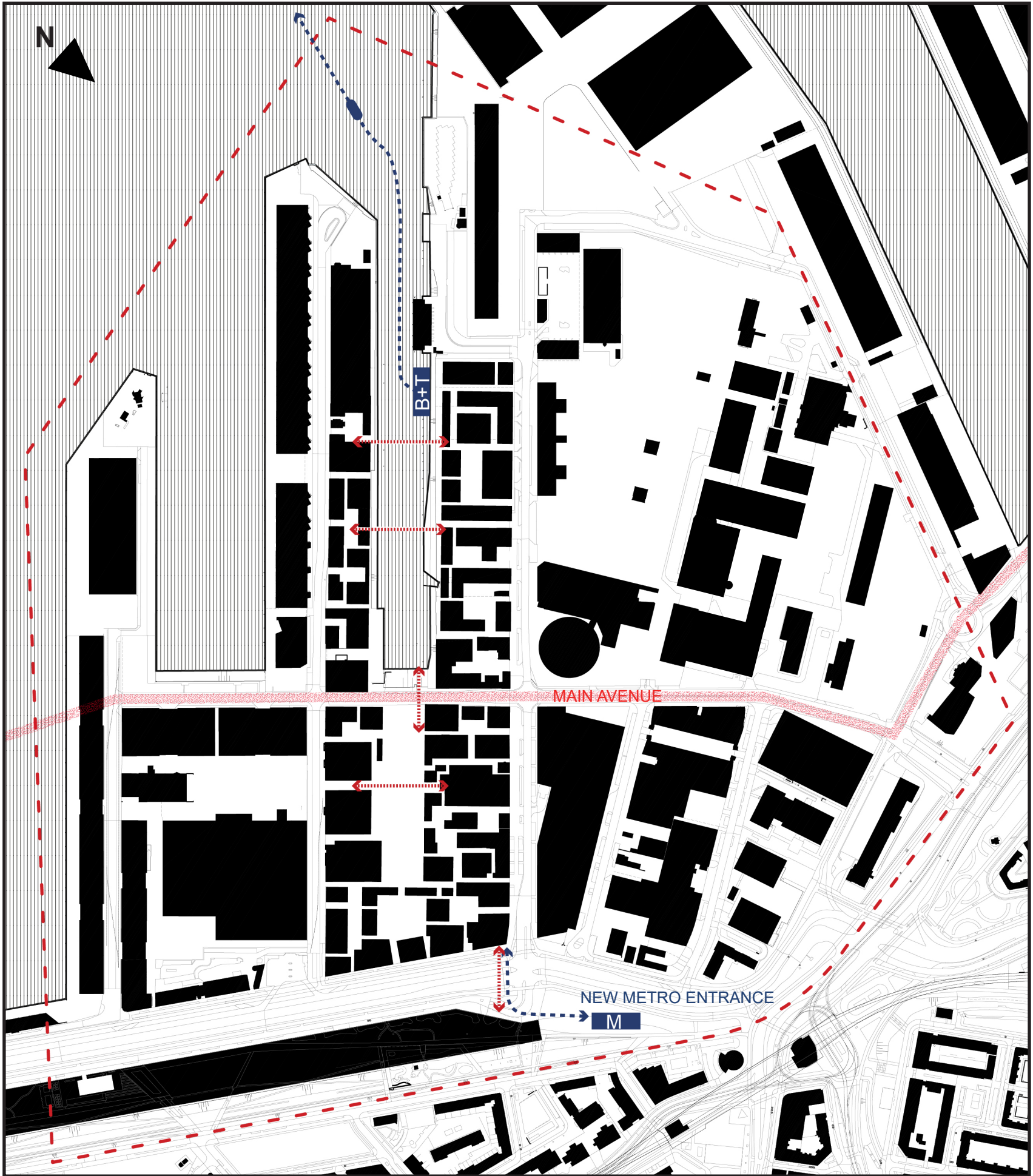
# MAKERS' MAZE

Markets' Maze, bird view



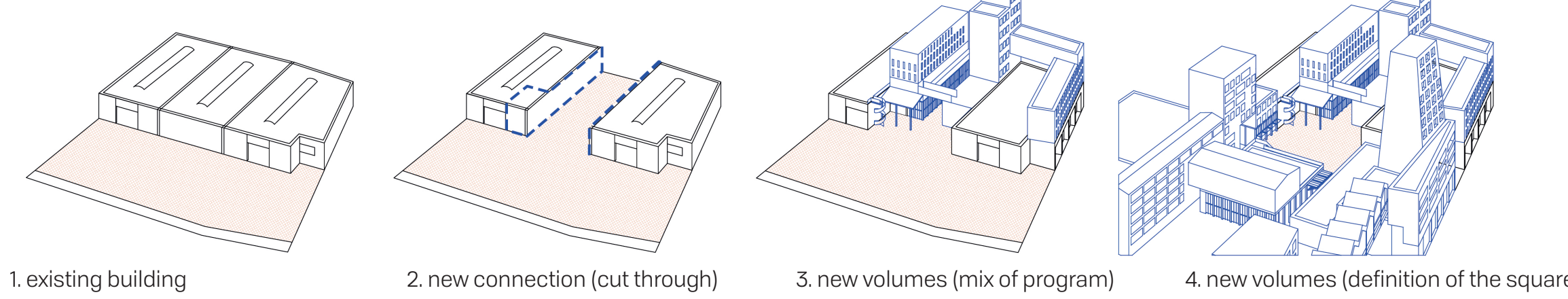
Strategy diagram 1:5000

The strip of Makers's Maze extends further towards RDM campus. Water buses and taxis provide direct connection between these districts, allowing closer collaboration and exchange.



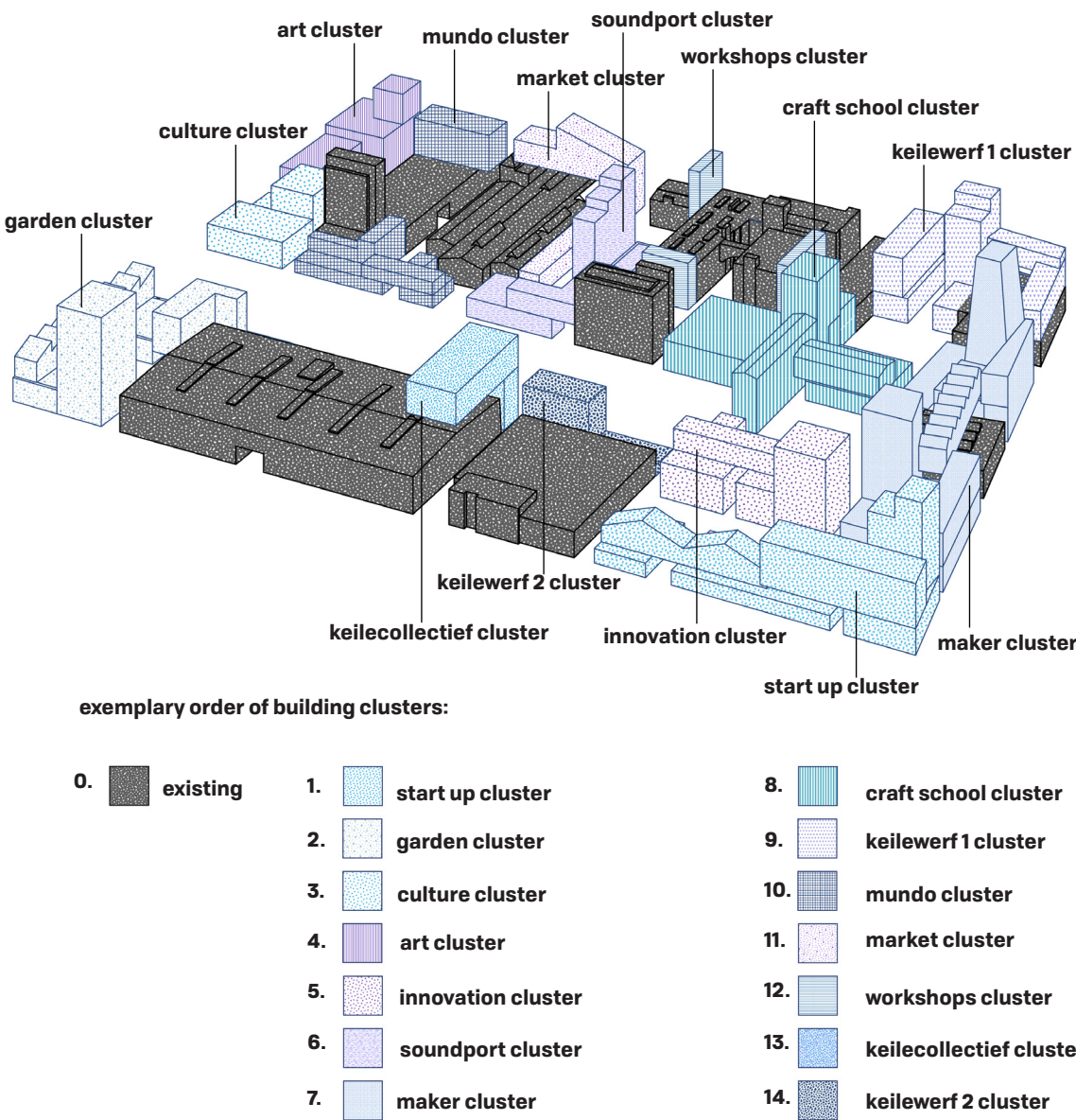
## Method

Existing buildings together with their outdoor spaces become an integral part of the cluster system. Cutting through and adding to are the two main operations used in the proposal. New alleys and passages cut through the existing warehouses, providing new connections and breaking the big scale of the buildings. New volumes are added providing better definition of the squares and desired mix of programs.



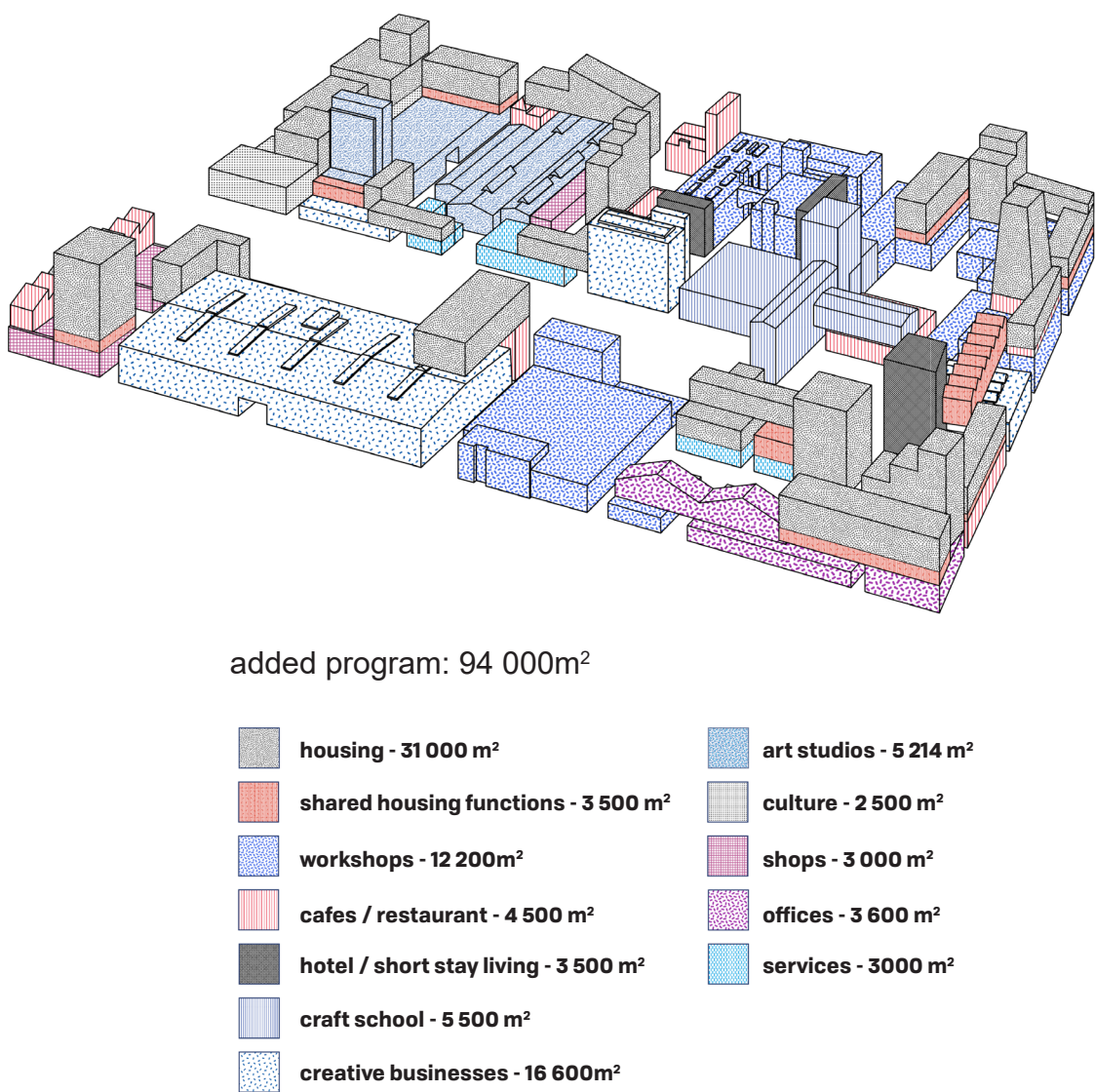
## Phasing

The design allows new buildings to be added slowly over time, with clusters developed not in tandem, but one by one, taking into account changes in the market. New clusters are developed first, giving financial possibility to gradually develop existing buildings into cluster.



## Program

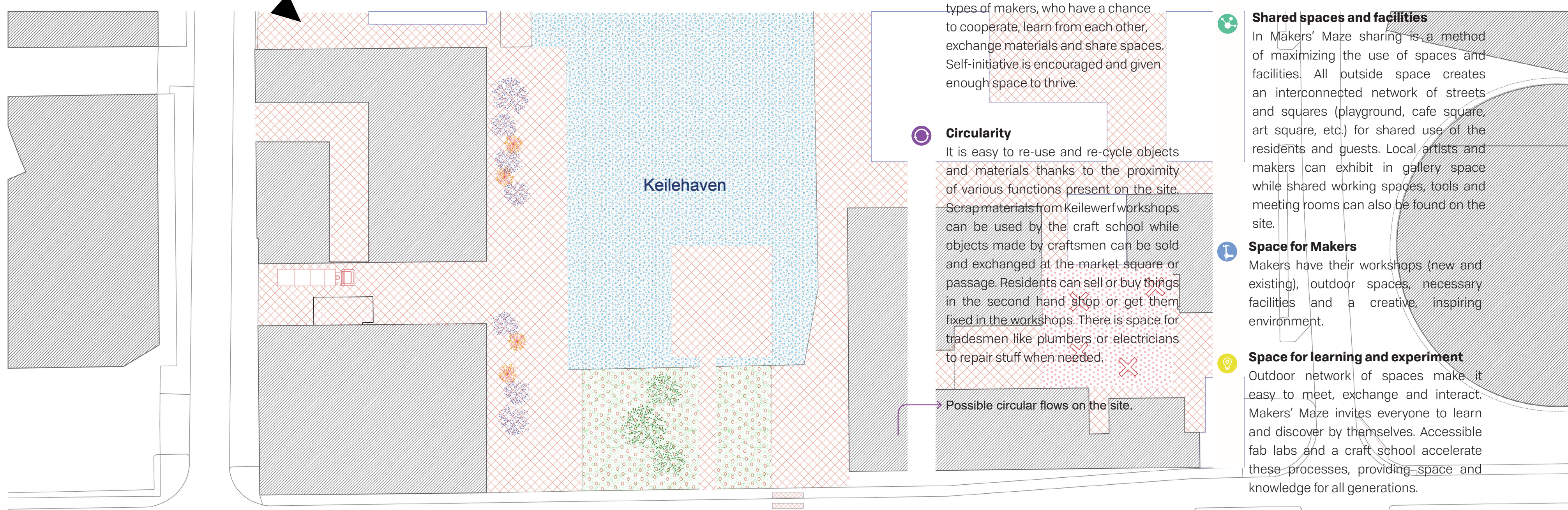
Each cluster has its own name and identity, however it is also a mix of program: short- and long-stay living towers, shared community floors, offices, commercial spaces, workshops, etc. With the development of each cluster, precise function distribution can be decided according to market needs.





# MAKERS' MAZE

Ground floor plan scale 1:600



Makers' Maze works as integral system, where different spaces and functions work together following sustainable and circular principles. Existing and new buildings create a rich mix of different types of makers, who have a chance to cooperate, learn from each other, exchange materials and share spaces. Self-initiative is encouraged and given enough space to thrive.

### Circularity

It is easy to re-use and re-cycle objects and materials thanks to the proximity of various functions present on the site. Scrap materials from Keilewerf workshops can be used by the craft school while objects made by craftsmen can be sold and exchanged at the market square or passage. Residents can sell or buy things in the second hand shop or get them fixed in the workshops. There is space for tradesmen like plumbers or electricians to repair stuff when needed.

Possible circular flows on the site.

### Sustainable mobility

Residents and visitors are given a chance to opt for shared electric cars, trucks and scooters. Charging stations can be found at the surrounding streets of the site.

### Shared spaces and facilities

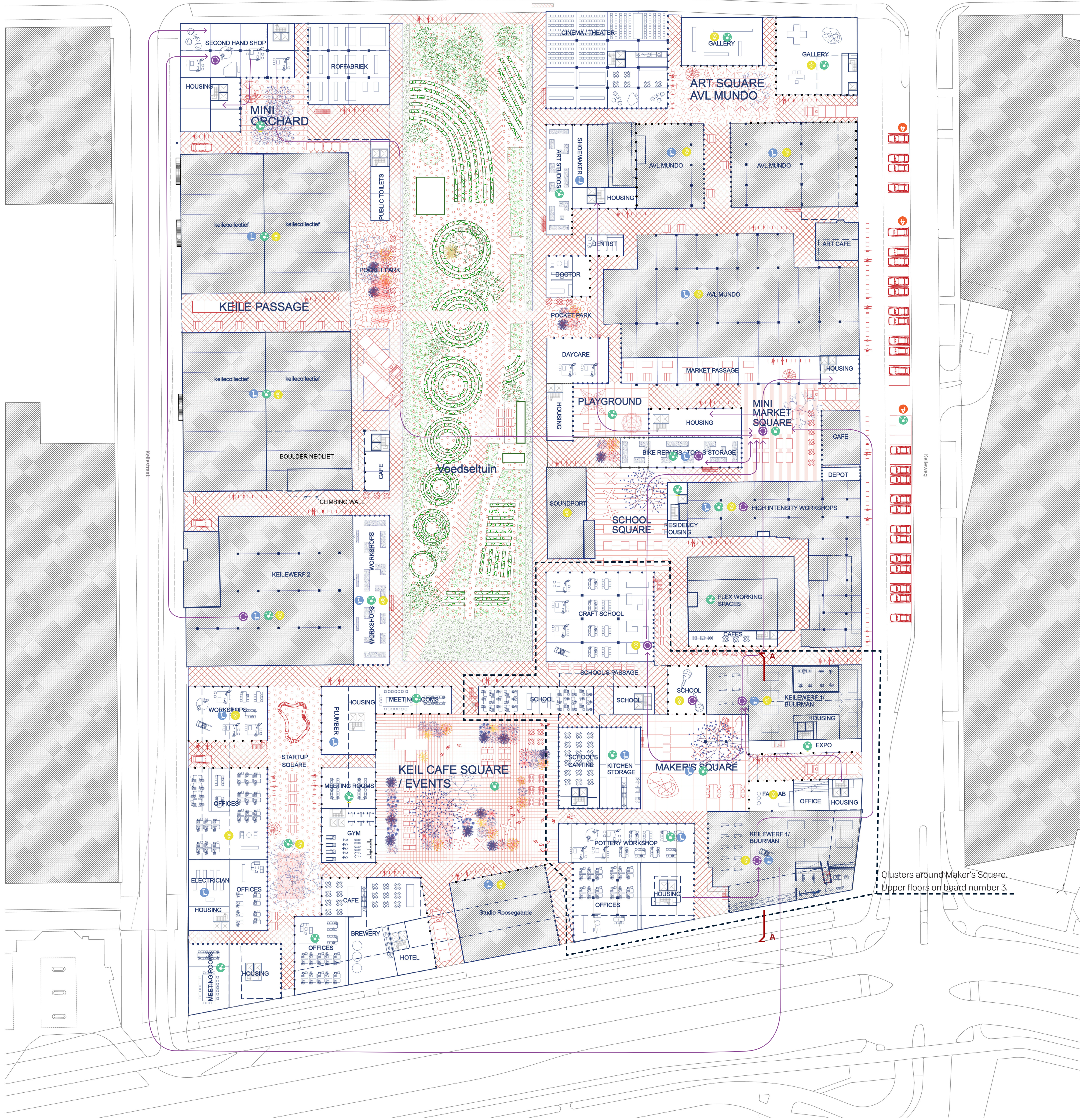
In Makers' Maze sharing is a method of maximizing the use of spaces and facilities. All outside space creates an interconnected network of streets and squares (playground, cafe square, art square, etc.) for shared use of the residents and guests. Local artists and makers can exhibit in gallery space while shared working spaces, tools and meeting rooms can also be found on the site.

### Space for Makers

Makers have their workshops (new and existing), outdoor spaces, necessary facilities and a creative, inspiring environment.

### Space for learning and experiment

Outdoor network of spaces make it easy to meet, exchange and interact. Makers' Maze invites everyone to learn and discover by themselves. Accessible fab labs and a craft school accelerate these processes, providing space and knowledge for all generations.

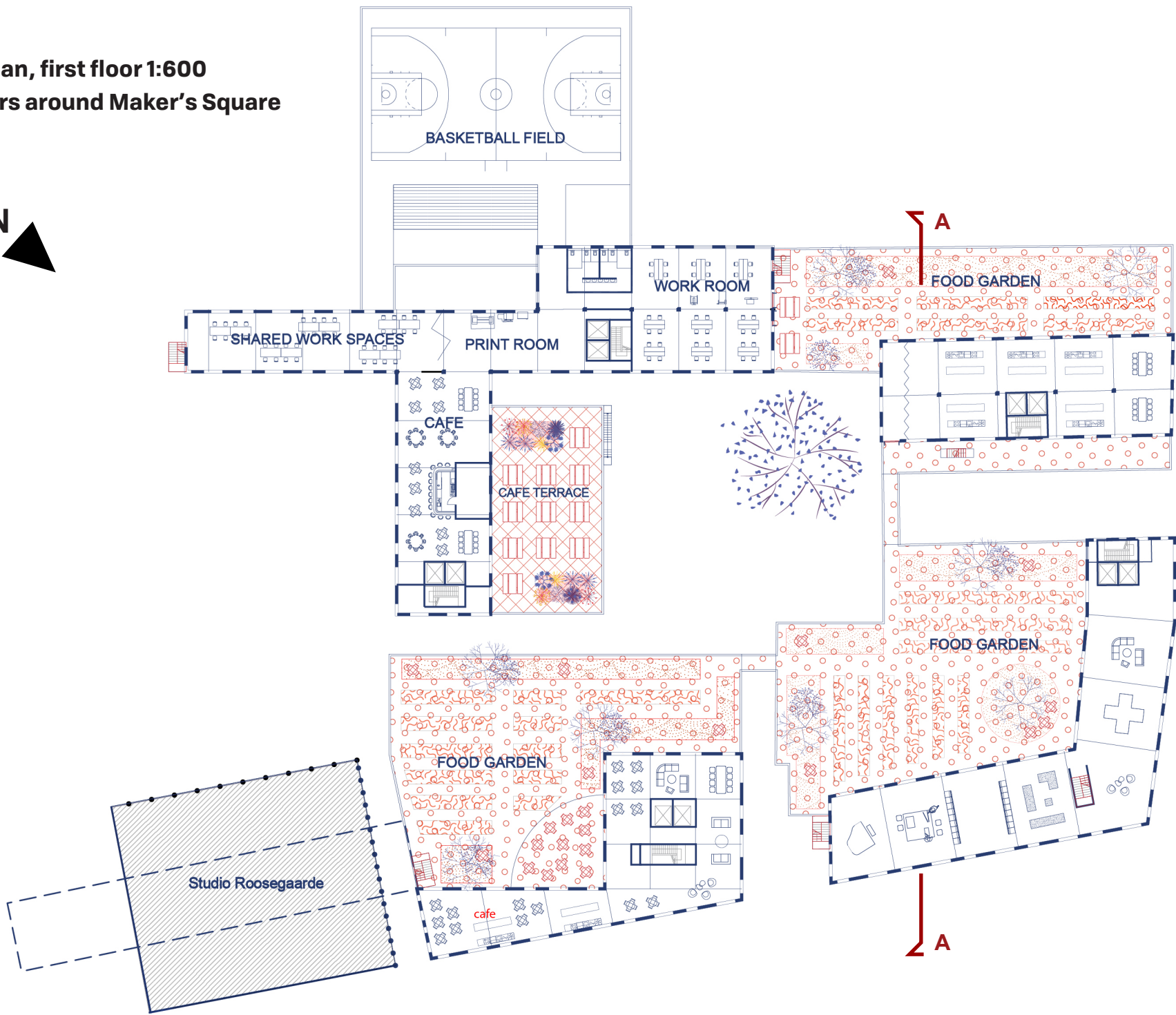


Clusters around Maker's Square.  
Upper floors on board number 3.

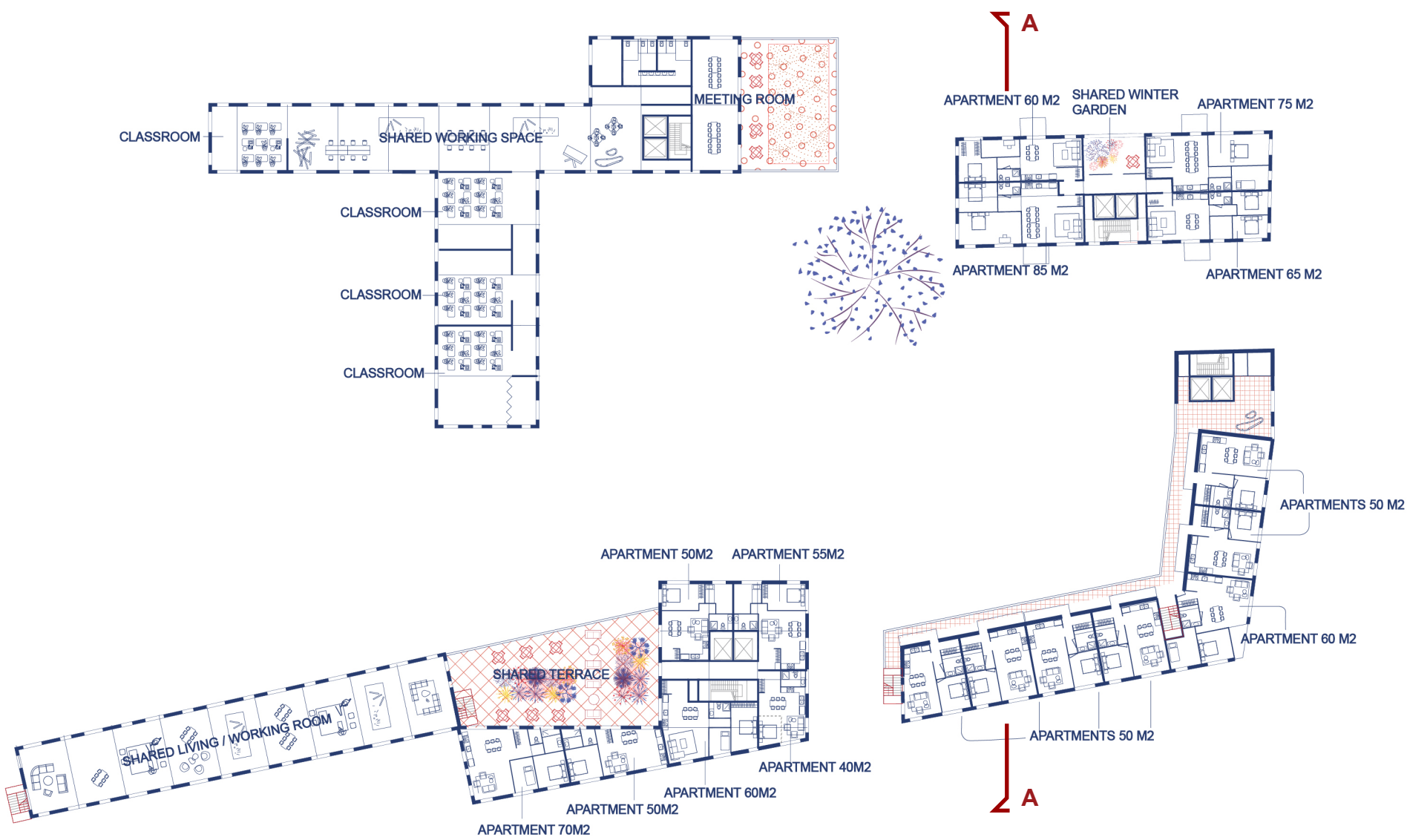


MAKERS' MAZE

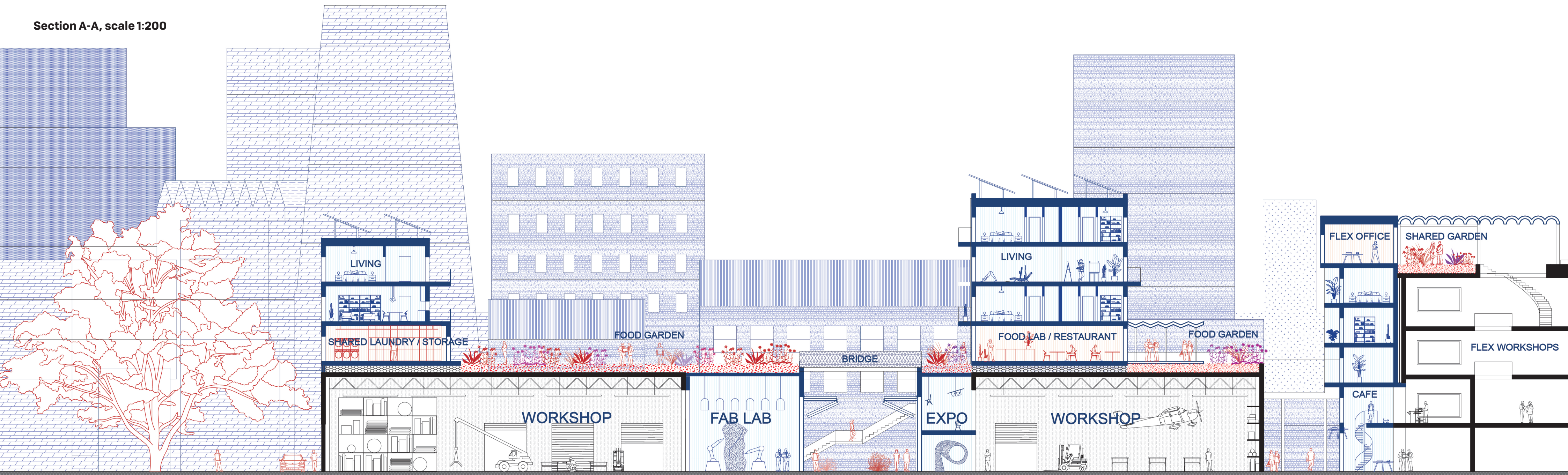
floorplan, first floor 1:600  
Clusters around Maker's Square



floorplan, second floor 1:600  
Clusters around Maker's Square



Section A-A, scale 1:200



Maker's square, impression, looking toward school cluster

